

## PORT LINCOLN YHA

### Affordable Accommodation 2018

Recently voted the Best YHA in Australia for the fifth year running, the Port Lincoln YHA is located at 26 London Street and is well situated to cater for a diverse range of guests being: groups, couples, singles, corporate or the backpacker. Guests with limited access to transport will find that Port Lincoln YHA's location to all the amenities the city has to offer with supermarkets, restaurants cafes and bars being a mere 600m from the front door.



Why not visit beautiful Port Lincoln for a weekend and enjoy our Pristine Seafood, cook up a storm in our Commercial style kitchen or simply enjoy all the tours available. Swim with Sealions, dive with the Great White Shark, go sandboarding, swim in rock pools and go sightseeing through the local National Parks.

## Reception

Most receptions have a little WOW factor, not here! We have a massive 4 metre WOW factor. Cruising along the wall is a replica of a 4 metre Great White Shark complete with dive cage. It often has guests running up and begging for their photo to be taken and it is excitedly uploaded to social media before they have even checked in! It is here that our team is ready to enthusiastically greet people; we also have 2 communal computers and free Wi-Fi and a great coffee machine.



**Guest Kitchen** - This is a kitchen that would even make Neil Perry jealous!

Squeaky clean, modern and fully equipped, enjoyed by many guests cooking up a feast.

We offer guests the option of preparing their own meal and encouraging socialising among guests.



- Some of the equipment in our kitchen includes;
- Oven, 2 microwaves and 4 x gas top stoves, 2 x 4 door fridges
- Large chest freezer, cutlery, plates, glassware, pots, pans, cooking utensils, rice cooker, woks, baking trays, even sharp kitchen knives.
- Free food shelf for guests to donate unwanted groceries.



### Common Room / Scubar

This is where the fun happens, music is played, a few cold beers & general relaxing

- Large 70" plasma TV, with DVD, CD & iPod connections
- Huge comfortable and colorful lounges and bean bags
- The SCUBAR, is a great place to meet after a day of exciting tours or work.

Commissioned by local carpenters to look like a sunken shipping container.



## Room Types

Our private rooms are of a high standard which appeals to couples and families or more affordable shared accommodation appeal to the budget minded travellers.

### Private Room features:

Rooms with queen bed (2 guests), also queen with king single on top (3 guests) have TV, ensuite and A/C.

We also have queen bed and a king single above. With window & ceiling fan and powered lockers.



### Family Room features:

Queen bed, 2 sets of bunks, TV, ensuite and A/C

### Dormitory Accommodation features:

All Dormitory accommodation comes with ensuites, A/C powered lockers. We have three 8 person dorms and one 10 person.

We also have 4 person dorms With window & ceiling fan and powered lockers.





**Outdoor facilities feature:**

- Large timber decked area for entertainment
- Outdoor BBQ, outdoor setting, sunbeds, table tennis.
- Fresh ingredients are available from our herb garden on the patio.
- Free car park (security surveillance & sensor flood lights)



### Movie Room features:

Everyone wants a movie room like this in their house! In our movie room we provide:

- Large screen TV & DVD player
- Over 400+ movies to choose from
- Extensive book swap
- Assorted board and card games
- In-House guitar available



Rooms	Type	TV	Ensuite	A/C	Bed Type	Max Pax	Price	14 <sup>th</sup> Dec - 3 <sup>rd</sup> Feb Easter	Per
1	Dorm		•	•	Long Bunk	10	\$27	\$30	Bed
2-4	Dorm		•	•	Long Bunk	8	\$32	\$35	Bed
5	Family Room	•	•	•	Queen+ 2 bunks(4)	6	\$182	\$200	Room
6-9	Private Room	•	•	•	Queen	2	\$90	\$99	Room
10- 11	Private Room	•	•	•	Queen + King single above	3	\$112	\$123	Room
12	Disabled Room	•			Queen	1	\$85	\$94	Room
13- 14	Mixed Dorm				Long bunks	4	\$32	\$35	Bed
15	Private Room				Single Beds	2	\$75	\$82	Room
16-17	Private Room				Queen / King single above	3	\$82	\$90	Room

To **BOOK ONLINE** go to <https://www.yha.com.au/hostels/sa/eyre-peninsula/port-lincoln-yha/> select your date >then your room choice > then Payment.

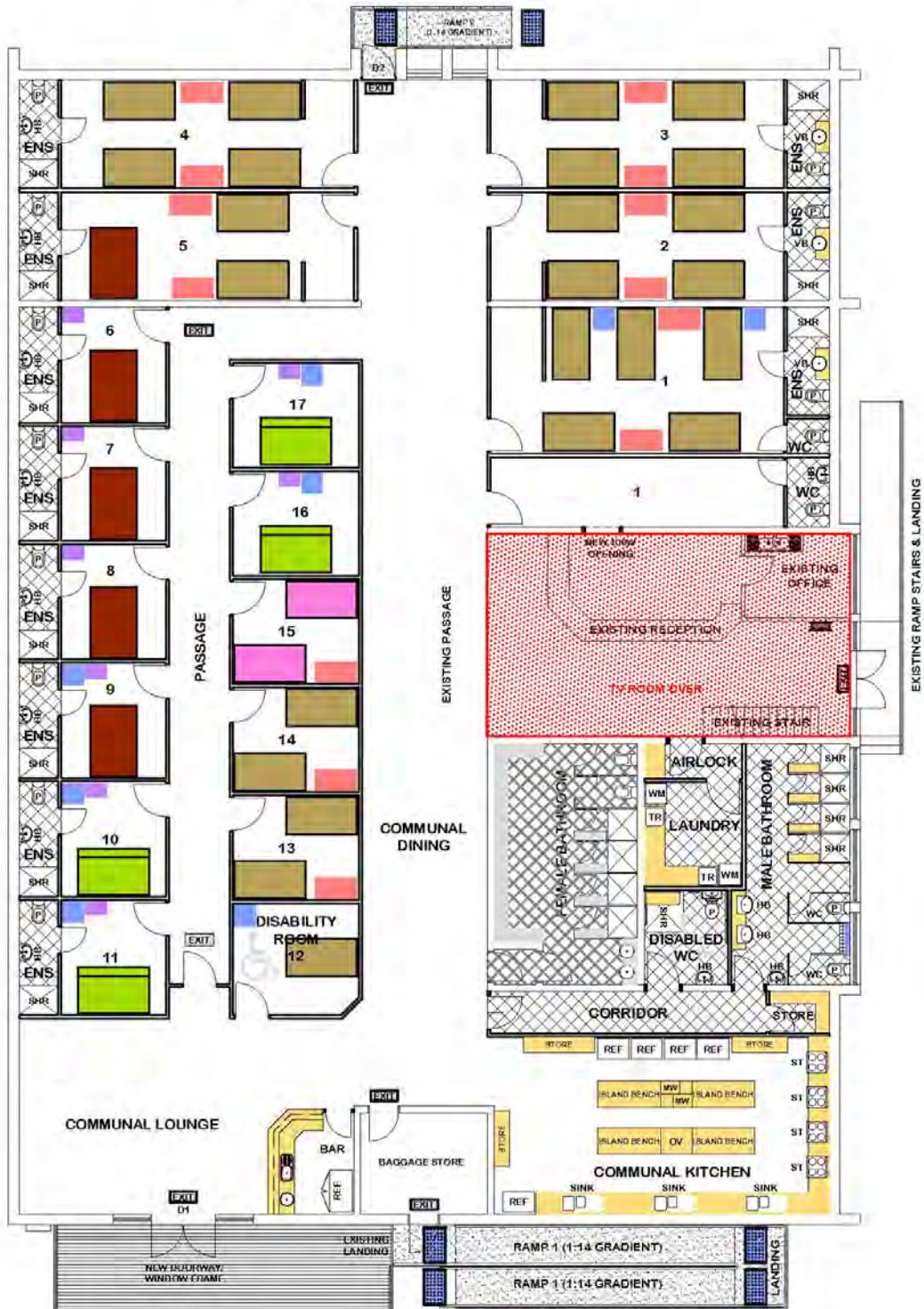
### Contact Details

Debi Forster - Hostel Manager  
**Port Lincoln YHA**  
 26 London St - Port Lincoln  
 South Australia - 5606  
 Ph: 08 8682 3605  
 E: [portlincoln@yha.com.au](mailto:portlincoln@yha.com.au)





# PL YHA HOSTEL LAYOUT



## FLOOR PLAN

DECK	58.2 m <sup>2</sup>
RAMP 1	25.0 m <sup>2</sup>
RAMP 2	9.6 m <sup>2</sup>
<b>TOTAL</b>	<b>92.8 m<sup>2</sup></b>

- DENOTES KING SINGLE BED (1070mm x 2030mm)
- DENOTES KING SINGLE BUNK TOP AND BOTTOM (1070mm x 2030mm)
- DENOTES QUEEN BED UNDER (1330mm x 2030mm) KING SINGLE BUNK OVER (1070mm x 2030mm)
- DENOTES QUEEN BED (1330mm x 2030mm)
- DENOTES WARDROBE (1200mm x 600mm)
- DENOTES WARDROBE (600mm x 600mm)
- DENOTES WARDROBE (600mm x 400mm)